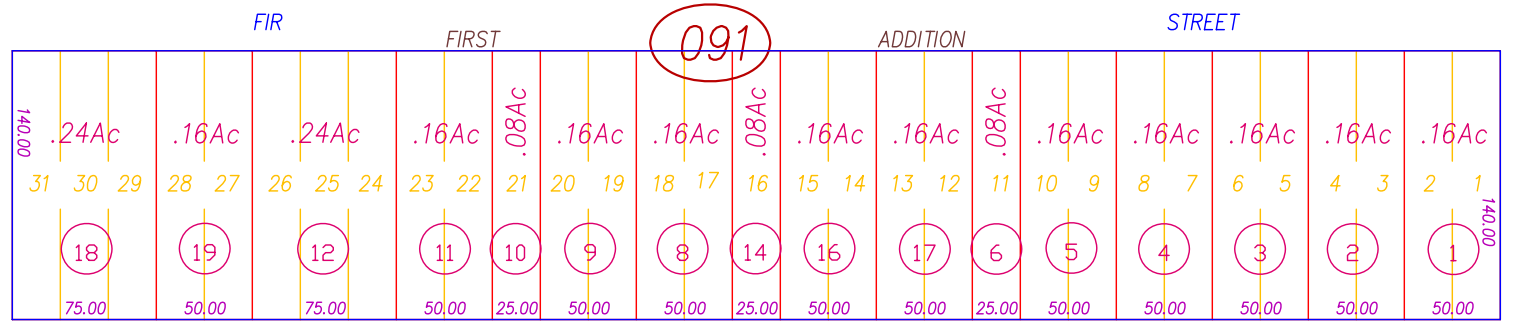


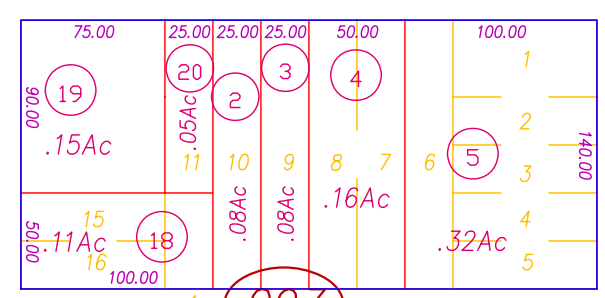
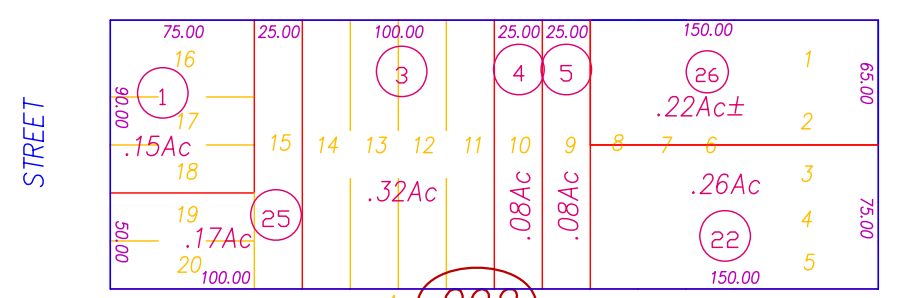
06

STIRLING CITY, PTN. SEC. 28, T.24N. R.4E. M.D.B.&M.

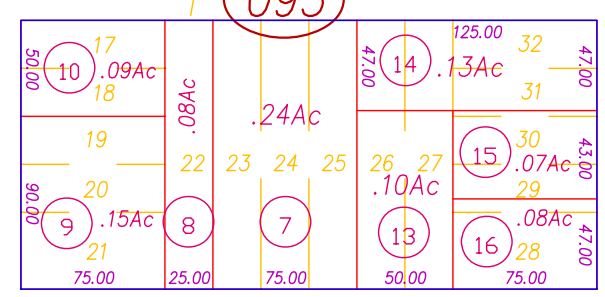
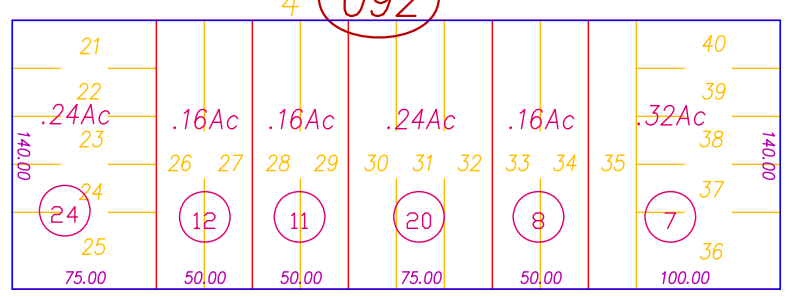


SKYWAY

(LAUREL STREET)



08

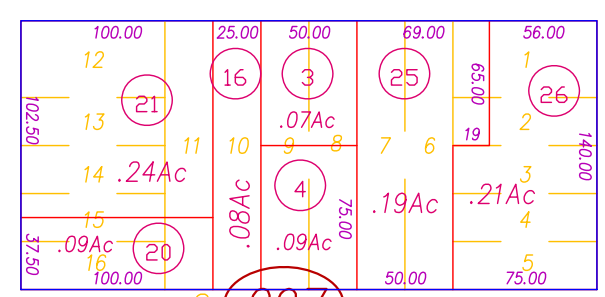
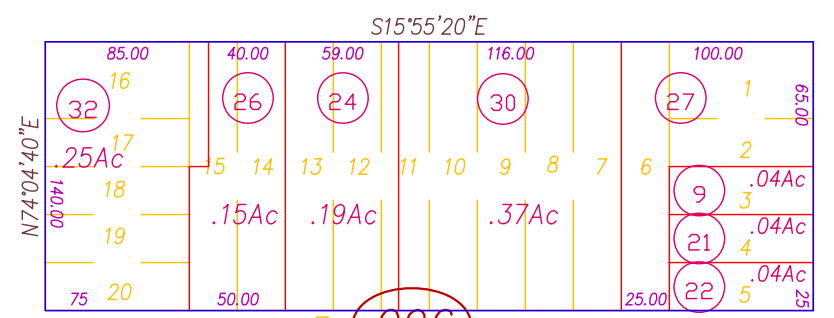


23

MANZANITA

143RS87

STREET



All Assessors' maps are prepared for local property assessment purposes ONLY. Parcels shown thereon may not comply with State and local subdivision ordinances. No liability is assumed for use of information shown on any Assessors' map. ALL ACREAGES APPROXIMATE PER RECORDED INFORMATION.

Butte County Assessor's Map
Book 59, Page 09

CREATED BY	DB	CREATED ON	9-11-2000
REVISED BY	DB	REVISED ON	03-09-09
		EFFECTIVE	2009-10 ROLL

Compiled By The Butte County Assessor's Office

06

OAK

STREET